



Ladder Frame Building

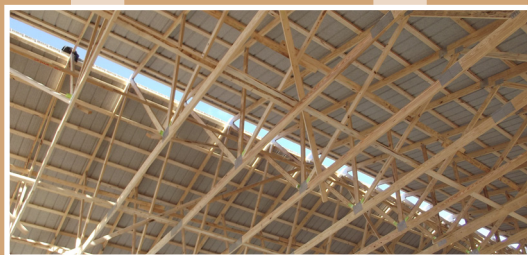
Pre-engineered Building Systems



- 2' x 6' Wall Framing, 4' o.c.
- 4' o.c. Trusses with 2-ply columns
- Roof purlins, 2' x 4' flat-2' o.c.
- 2' o.c. Girt Spacing



- ▶ Faster and easier to frame
- ▶ More competitive than conventional building designs
- ▶ Ceiling is faster using 4' o.c. spacing
- ▶ Vertical steel exterior and interior steel siding
- ▶ Reduces additional framing labor and materials
- ▶ Easy to add future insulation
- ▶ Easier header and opening installation
- ▶ Fully guaranteed with warranty



Like all EPS designs, this Ladder Frame Design is Pre-Engineered and can be tailored to your needs in a Quality, Cost-effective Building Solution for you!



www.epsbuildings.com

Phone: 800-967-2130

Energy Panel Structures

Headquarters in Graettinger, IA and Locations in Perryville, MO and Clyde, NY

100% Employee Owned-100% Committed to Quality

Standard Building Package

Wall Framing to Include:

2 X 6 Wall Package:

- Sill Seal and Treated Sill Plate
- Double Pre-Cut Wall Stud 48" o.c.
- SPF#2 Double Top Plate
- Pre-cut Girts to be spaced 24" o.c.
- Paslode Gun Nail Package (optional)

Exterior Wall Finish:

- Exterior 29 ga. painted steel
- #10 x 1-1/2" painted steel screws
- Siliconized Polyester paint system with 40-year warranty
- 82,000 psi Grade E steel



Roof Options:

Standard roof system:

- Pre-engineered roof trusses @ 4' o.c.
- 4/12 roof pitch (3.75 may be substituted for widths over 74') (optional various pitches)
- Roof Loading per IBC 2009. Trusses have a 5# Top and Bottom Chord Dead Loading.
- 90 MPH wind load and county snow-load design
- All machine stress rated lumber used in truss manufacturing
- SPF #2 or better 2"x 4" continuous roof purlins
- SPF #2 or better 2"x 6" fascia board
- SPF #2 or better 2"x 4" bottom chord bracing
- SPF #2 or better 2"x 4" continuous lateral bracing
- Painted 29 ga. roof steel screw fastened on with #10 x 1-1/2" painted roof steel screws
(See paint chart for complete details)
- Siliconized Modified Polyester or equivalent paint system
- Ridgecap, rake and corner trim
- 12" Overhang both sidewall eaves Vented Aluminum Soffit Panels (optional 24")
- Fascia trim to be Post Trim and Eave Molding
- Continuous vented ridge system with Uni-Vent vented closure under-ridgecap (optional)

Simply Better Buildings



www.epsbuildings.com

Phone: 800-967-2130

Energy Panel Structures

Headquarters in Graettinger, IA and Locations in Perryville, MO and Clyde, NY

100% Employee Owned—100% Committed to Quality

*Details may change subject to engineering and facility availability. Check your plans for exact details.